

Forestry

in South Carolina

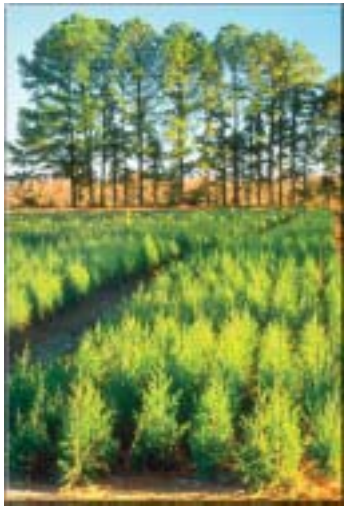
Healthy

Productive

Sustainable



Forests cover two-thirds of the total land area in South Carolina and are essential for our state's environment, economy, and quality of life. South Carolina's forests are healthy, productive, and sustainable.



Top Crop

Timber, with a delivered value of \$835 million, is South Carolina's most valued agricultural crop.



Planted Back

Over 125,000 acres of trees are planted every year in South Carolina. We plant an average of over 92.7 million seedlings each year.

Productive

Advances in technology and science enable greater utilization of every part of the tree.

Jobs

■ The forest products industry employs 30,272 individuals, with a payroll of over \$1.24 billion. It is the third largest employer and third highest payroll of South Carolina manufacturing industries.



Capital Investment

■ Forest products ranks fourth in capital expenditure, investing over \$330 million every year.

Hunting & Fishing

■ Increasing use of forest lands by hunters and fishermen add about an additional \$1.3 billion each year.



Production

■ South Carolina produces four million cords of pulpwood and 1.5 billion board feet of sawtimber each year.



Healthy

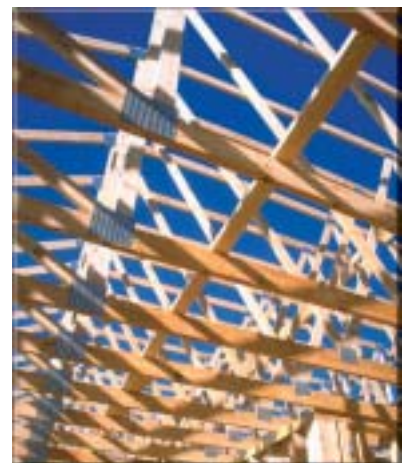
South Carolina's forests are healthier than anytime in the past 100 years.

- There are 12.4 million acres of forest land in South Carolina.
- Over half of the forest land in South Carolina is in hardwood forest types.

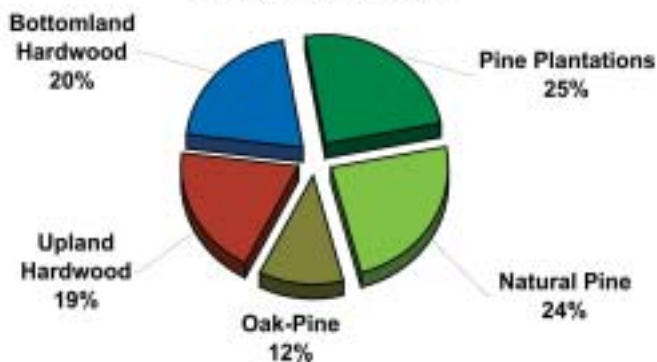


Economic Contributor

The forest industry generates \$14 billion annually to the state's economy.



**South Carolina
Forest Type Distribution
12.4 Million Acres**

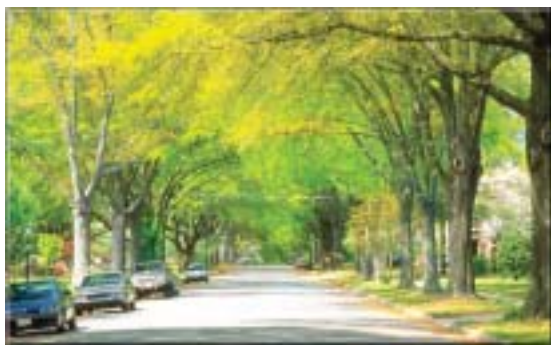


Ownership

Two-thirds of South Carolina forests are owned by private, non-industrial landowners.



Skeet and Gail Burris, owners of Cypress Bay Plantation, Beaufort, SC, were 2000 National Outstanding Tree Farmers of the Year.



Environment

South Carolina's forests help keep the air and water clean and forest management helps keep the forests healthy and thriving.

- Forest management has the least environmental impact of any land use.
- The greatest threat to our forest resources is the conversion to other land uses, primarily urban use and agriculture. The conversion results in a net loss of over 25,000 acres of forest land every year.



Members of the South Carolina forestry community identify, manage, and protect special sites with unique historical, ecological, or biological significance.

Whether it's a red-cockaded woodpecker habitat or a national champion tree, through private and public conservation efforts, they're taken care of.

Sustainable

Sustainable management of our forests means wood products, wildlife habitat, clean air and water, recreation, and scenic beauty.



94% of timber harvests use Best Management Practices to protect water quality.

- Each year, South Carolina grows 26% more timber than is removed by harvesting, land clearing, changes in land use, and natural mortality.
- Forest growth exceeds removals by an average of over 230 million cubic feet every year.
- Since 1958, the volume of standing timber has more than doubled.
- 48% of paper products are recycled.
- Timber harvesting is regulated by the SC Pollution Control Act and many other laws.



Wildlife Habitat

Through careful planning, our forests are sustainably managed to enhance wildlife habitat.

- Forest management increases the variety of habitat types available for native wildlife, and contributes to biological diversity.
- Forest management can be designed to enhance biodiversity, or to meet particular habitat needs for featured species such as an endangered plant or animal.
- Only a full range of forest types, ages, and sizes will fulfill the varied habitat needs of native wildlife species.

Wood: a wise choice

Here are a few reasons why wood is a favorite natural resource.

Renewable

▶ Unlike aluminum, steel, concrete, or plastic, wood is a renewable natural resource.

Recyclable

▶ Wood can be reused, recovered, and recycled. There are limits to the number of times a product can be recycled, but we're learning how to effectively extend the life of wood fiber.

Biodegradable

▶ Wood is an "all natural" product which can be safely disposed of once it has outlived its usefulness. Wood can be readily returned to the natural cycle of decay and decomposition.

Energy Efficient

▶ It takes less energy to manufacture, and less energy to use wood than products made from steel, aluminum, concrete, or plastic.

Environmentally Friendly

▶ Manufacturing processes for wood products release fewer toxins into the air, water, and soil than manufacturing processes for any available alternative resources.



Versatile

Trees may be used as solid wood, fibers, chemicals, and lignin. Each of those is used in the manufacture of thousands of items used every day.

Bark

▶ Bark is used as fuel in mills and is also a source of chemicals, resins, waxes, vitamins, plywood adhesives, plastic fillers, lacquers, and mulch.

Wood Flour and Resins

▶ Wood flour and resins using cellulose filler are principal components of dinnerware, electrical receptacles and parts, toys, handles for cooking utensils, and camera cases.

Ethyl Cellulose

▶ Ethyl cellulose is used in making tool handles, photographic film, and football helmets. Acetate filament yarns make textile products such as clothing, drapes, and rugs.

Torula Yeast

▶ Torula yeast is a high protein



product made from wood sugars as a byproduct of the pulping process in papermaking. Type S Torula is used in baby food and cereals. Type F Torula is used in feed supplements for cattle, fish, and chickens.

Turpentine

▶ Turpentine and tall oil are resinous materials that are also reclaimed from the paper pulping process. They are important ingredients in paint, varnish, adhesives, soaps, and polishes. Synthesized essential oils are used in gum, toothpaste, detergents, and shampoos.

Useful Products

Here are a few of the many products that come from trees:

sandwich bags
coffee filters
tissues
disposable diapers
hairspray
building insulation
furniture
charcoal
cork
shoe polish
cosmetics
oil spill control agents
garden mulch
grouting
stain remover
cologne
solvents
baby food
imitation bacon
cereals
explosives
vegetarian foods
baked goods
beverages
sanding sealers
food additives
food thickeners
vanilla flavoring
filters
rayon clothing
adhesives
floor tiles
toothpaste
helmets/hardhats
luggage
plastic twines
cleaning compounds
ceramics
deodorant
fungicides
insecticides
crayons





Sustainable Forestry Initiative® Program

South Carolina's forestry community is committed to practices that promote sustainable forestry. This includes growing more timber than it harvests, protecting fish and wildlife habitat, and adhering to Best Management Practices.

It also includes being a "good neighbor" by minimizing visual impacts of harvesting.

The Sustainable Forestry Initiative (SFI) Program is a pledge.

It's about managing our forests to meet present needs without compromising future generation's ability to use the forest for essential products while protecting and enhancing other resource values.

We're working together to ensure that South Carolina's forests are growing for the future.



www.aboutSFI.org

Join the SC Forestry Association

The South Carolina Forestry Association (SCFA) is a private organization of individuals and companies dedicated to forest conservation and the sustainable use of our natural resources.



SCFA Headquarters

The Association provides a strong unified voice for South Carolina forestry.

- It provides current information on timber taxation, market trends, environmental and other issues.
- It sponsors workshops for landowners on such topics as best management practices, property rights, estate planning, and timberland investment.

And those are just a few of the benefits realized when you join.

Call 803/798-4170 today for a membership brochure.

South Carolina Forestry Association

Street address: 4901 Broad River Road, Columbia, SC 29212

Mailing address: P O Box 21303, Columbia, SC 29221-1303

Phone: 803/798-4170, **FAX:** 803/798-2340, **Website:** www.scforestry.org

Forest resources and economic data were provided by Clemson University Cooperative Extension Service, SC Forestry Commission, and US Forest Service.

Photos were provided by: Michelle Johnson and Anne Kyle, SC Forestry Commission; Heather Lowe, HeadWestvaco; and the US Forest Service.